



POTI CITY HALL

STRUCTURE OF POTI CITY HALL



4400 Poti, David Agmashenebeli St. N12



Poti City Hall

A City Hall is an institution subordinated to the executive body of the municipality, which ensures the exercise of powers of the Mayor. The City Hall shall be headed by the Mayor.

The City Hall shall consist of structural units. A structural unit of a City Hall shall, within the scope of powers determined by the respective statute, ensure the performance of the assignments of the municipality Sakrebulo and of the Mayor. A structural unit of a City Hall may have sub-divisions that are determined by the statute and the staff list of the respective structural unit of the City Hall.

The City Hall conducts its activities in accordance with the Constitution of Georgia, The European Charter of Local Self-Government, Organic Law of Georgia "Local Self-Government Code", current legislation and regulations of Poti Municipality City Hall.

Political officials of the City Hall, structural units and civil servants act in compliance with the principles of legality, publicity and citizen participation in the decision-making process.

The City Hall has a stamp, a letterhead, and a seal with the identification code of Poti Municipality and the inscription:

"Georgia. Poti Municipality City Hall."

Poti City Hall



BEKA VACHARADZE

Mayor

Mayor of Poti City Municipality

Phone: (0493) 22 25 25

E-mail: beka.vacharadze@poti.gov.ge

LOCAL POPULATION

MAYOR



CURATORIAL FIELD

LEGAL ENTITIES SUBORDINATE TO THE MUNICIPALITY

NON-ENTREPRENEURIAL NON-COMMERCIAL LEGAL ENTITY

LIMITED LIABILITY COMPANY

FIRST DEPUTY MAYOR - DAVIT KVITSIANI

NNLE "Poti Central Park"

NNLE "Cemetery Maintenance Center of Poti City Municipality"

NNLE "Services Center of Poti Municipality City Hall"

LLC "Port Transport Company"

LLC "Poti City Project"

DEPUTY MAYOR - MAMUKA PAPASKIRI

NNLE "Self-Governing City-Poti Children's Center"

NNLE "Multifunctional Swimming Complex of Poti Municipality"

NNLE "Municipal Inspection"

NNLE "Social Service Center of Poti Municipality"

LLC "Laboratory Research Center"

DEPUTY MAYOR - LEKSO TODUA

NNLE "Self-Governing Poti Public Health Center"

NNLE "Sports and Tourism Center of Poti Municipality"

NNLE "Out-of-School Sports Educational Institution - Rugby Sports School"

NNLE "Archil Khorava Extracurricular Art School"

NNLE "Art School of Poti Municipality"

NNLE "Creative Center of Pupil Youth of Poti Municipality"

NNLE "Exhibition Hall of Poti Municipality"

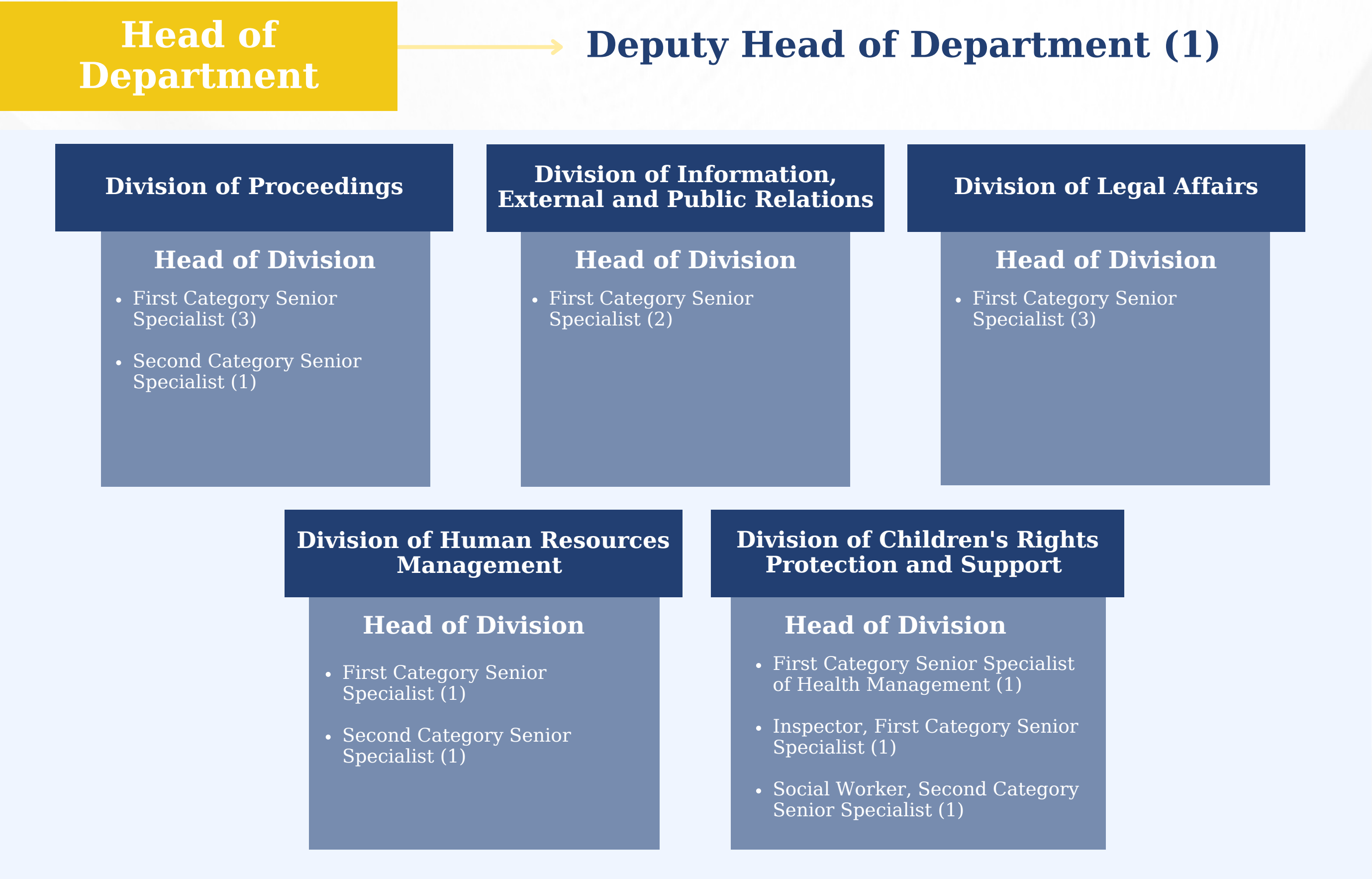
NNLE "Self-Governing Poti Library Union"

NNLE "Self-Governing City - Poti handball club Golden Aries"

NNLE "Nana Chess Club of Poti Municipality"

NNLE "Self-Governing Poti Preschool Educational Union"

Administrative Department



**Mayor
Beka
Vacharadze
(Curator)**

Internal Audit and Inspection Department

**Head of
Department**

Deputy Head of Department (1)

Division of Internal audit

Head of Division

- First Category Senior Specialist (3)

Division of Inspection

Head of Division

- Second Category Senior Specialist (1)

**Mayor
Beka
Vacharadze
(Curator)**

Sustainable Development and Innovations Department

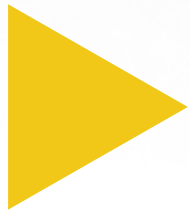


**Mayor
Beka
Vacharadze
(Curator)**

Military Registration, Recruitment and Mobilization Department

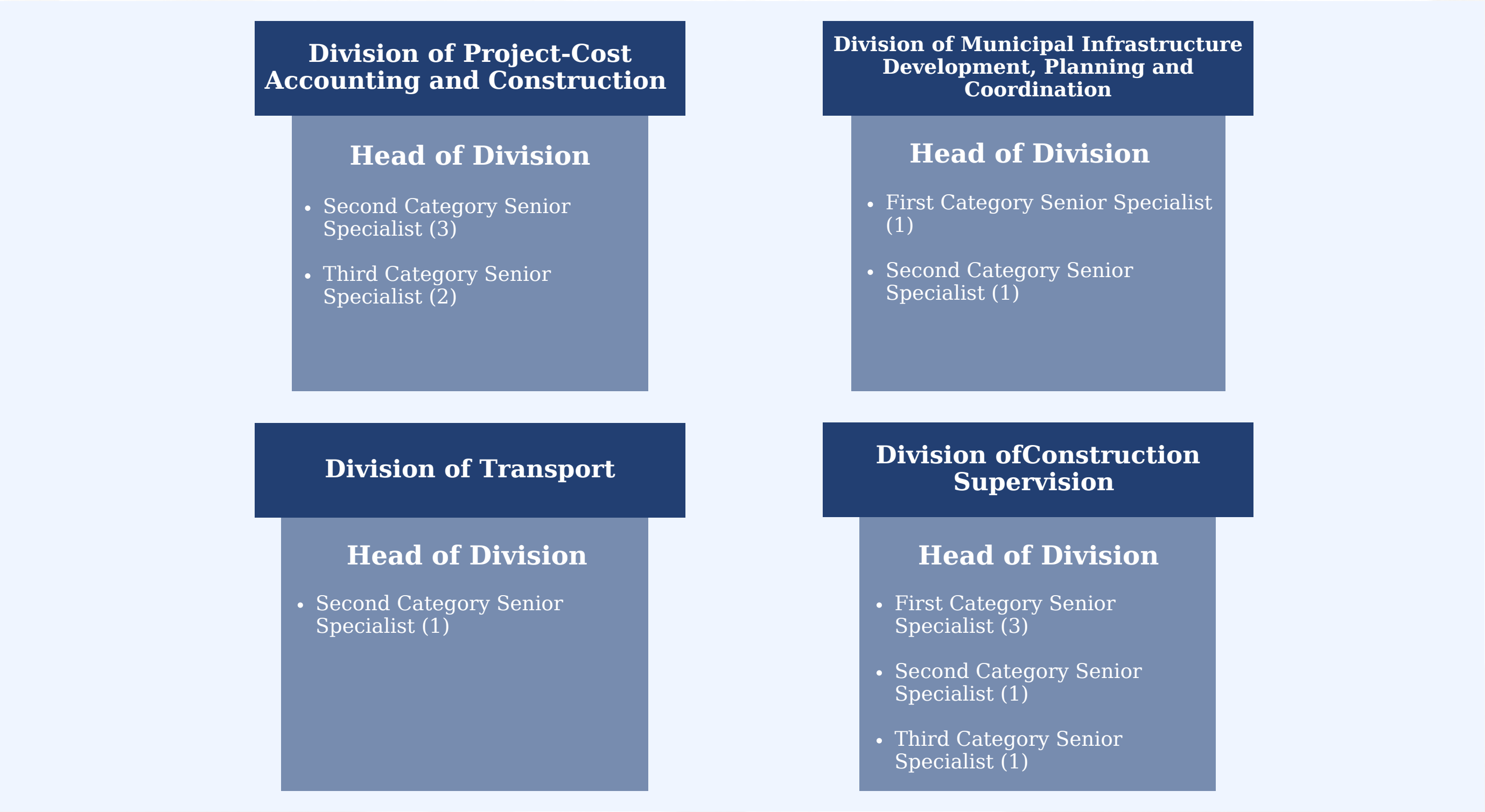
Head of
Department

Mayor
Beka
Vacharadze
(Curator)



- First Category Senior Specialist (3)
- Second Category Senior Specialist (1)

Infrastructure Department



Deputy Mayor
David Kvitsiani
(Curator)

Architecture Department



Deputy Mayor
David Kvitsiani
(Curator)

Healthcare and Social Protection Department

**Head of
Department**

Deputy Head of Department (2)

**Deputy Mayor
Mamuka
Papaskiri
(Curator)**

Division of HealthCare

Head of Division

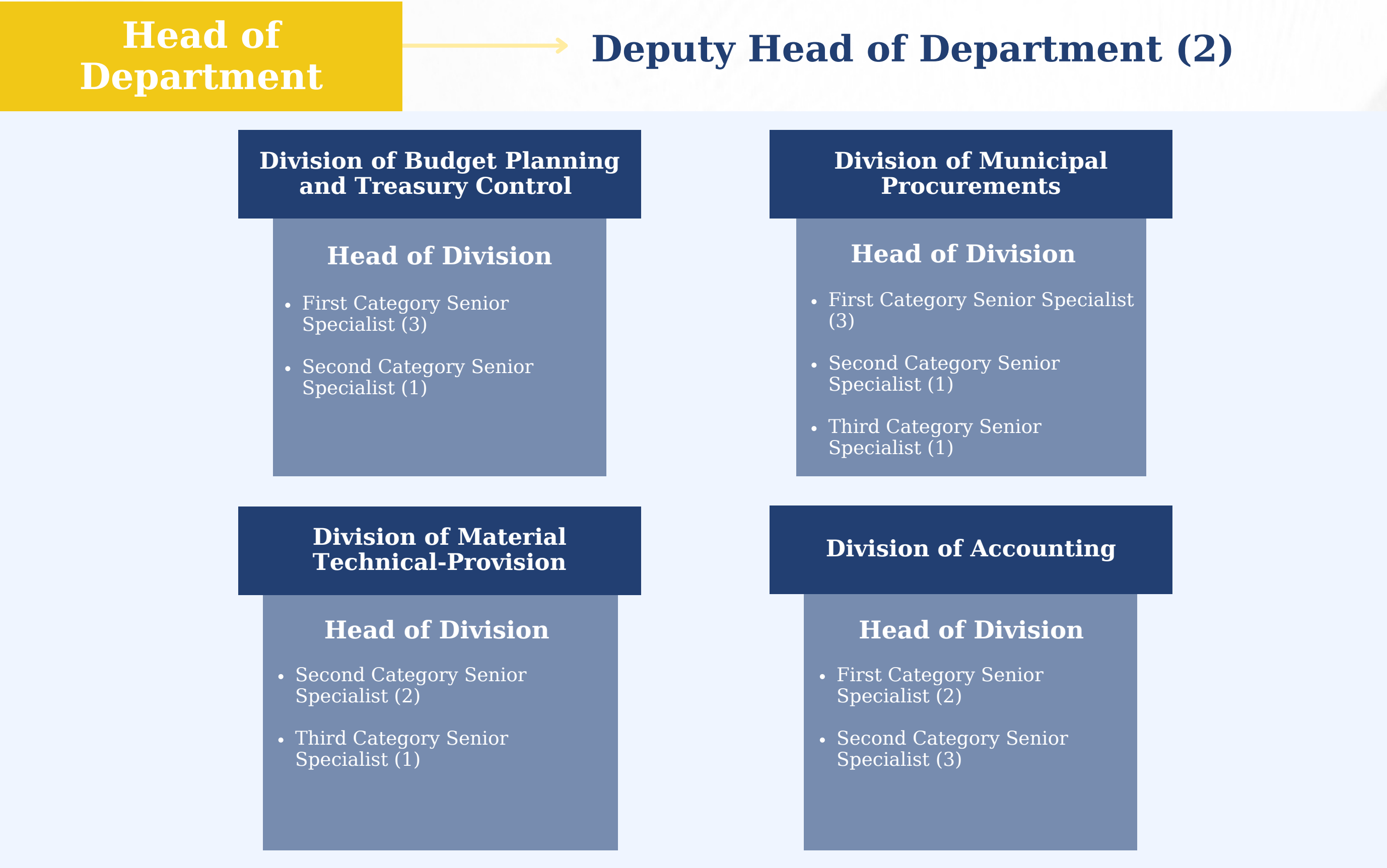
- First Category Senior Specialist (1)
- Third Category Senior Specialist (1)

**Division of Social Protection and Gender
Equality**

Head of Division

- Second Category Senior Specialist (1)
- Third Category Senior Specialist (3)

Financial-Budgetary and Procurement Department



**Deputy Mayor
Lekso Todua
(Curator)**

Culture and Sport Department

**Head of
Department**

Deputy Head of Department (1)

**Division of Culture and Monuments
Protection**

Division of Sports and Youth Affairs

**Deputy Mayor
Lekso Todua
(Curator)**

Head of Division

- Second Category Senior Specialist (1)
- Third Category Senior Specialist (1)

Head of Division

- First Category Senior Specialist (3)
- Third Category Senior Specialist (1)